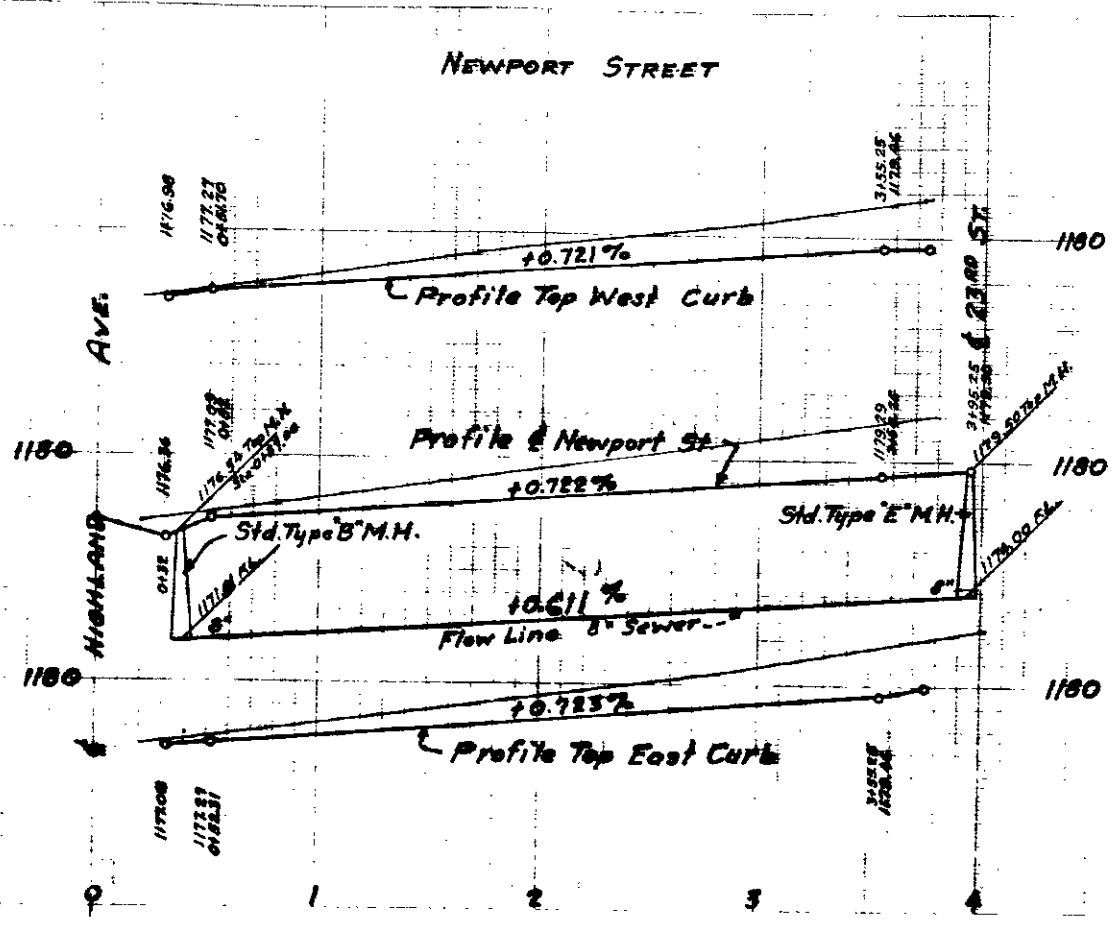
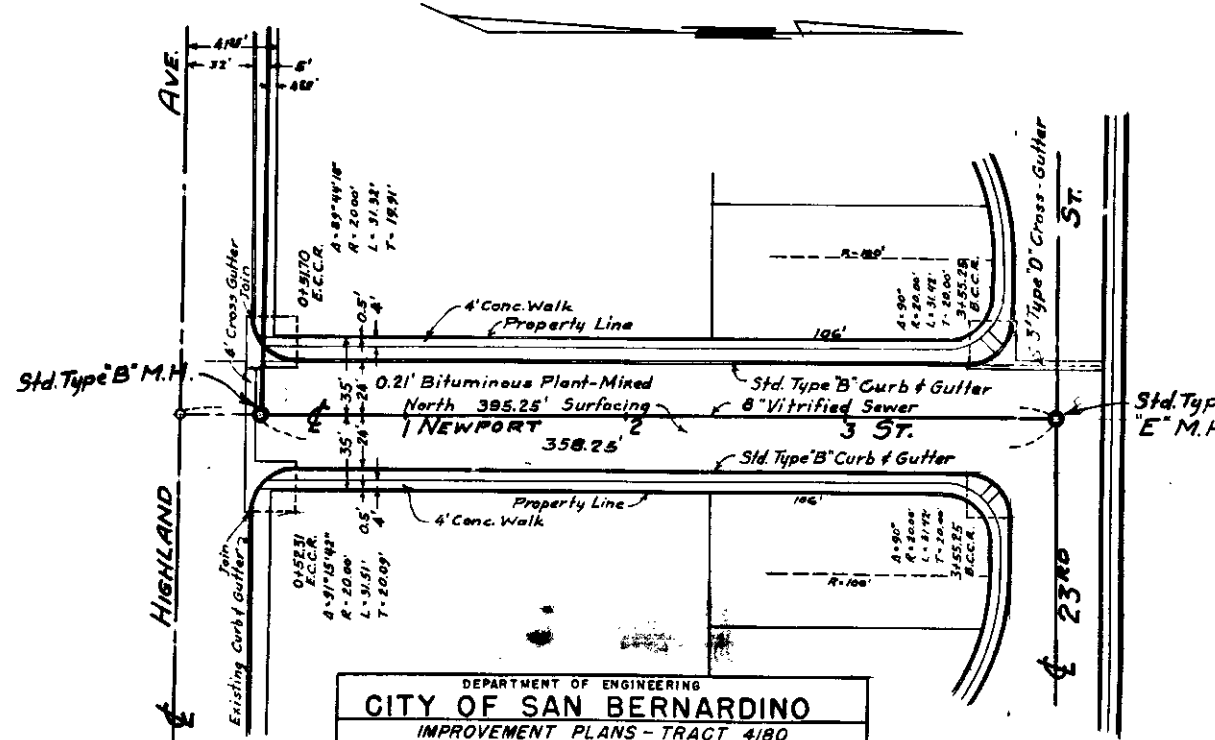
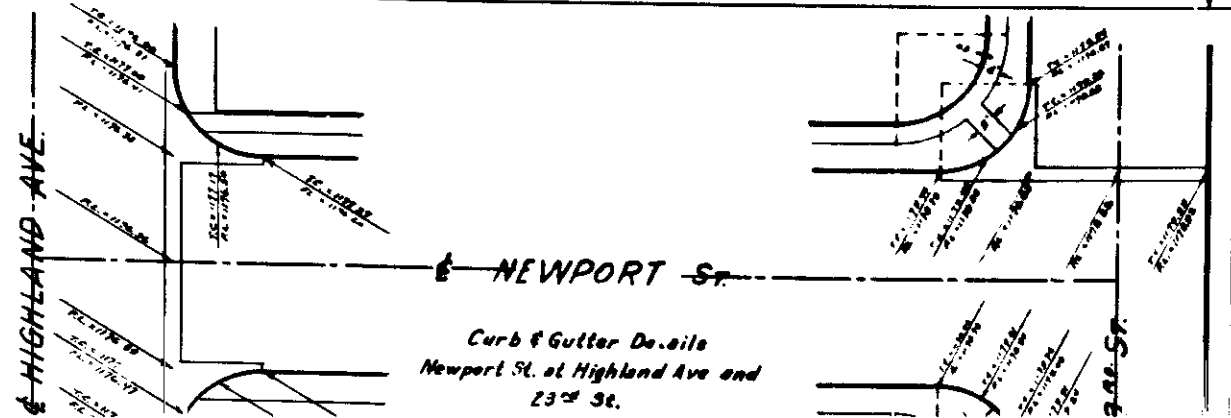
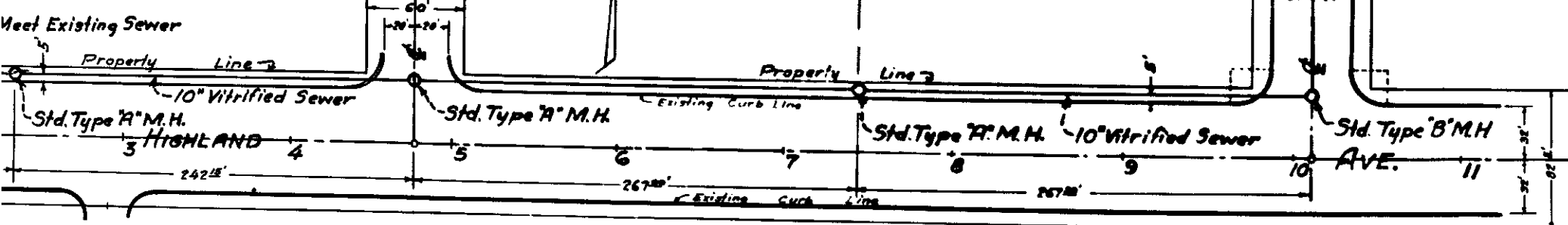


Note: All work embodied on these plans shall be done in conformity with the applicable provisions of Specifications No. 2027. For Typical Cross-Section See Sheet 2.

PLAN SCALE 1"=40'



Profile Scales  
 Hor. 1"=40'  
 Ver. 1"=4'



DEPARTMENT OF ENGINEERING  
**CITY OF SAN BERNARDINO**  
 IMPROVEMENT PLANS - TRACT 4180  
 HIGHLAND AVE. bet. Lawrence & Newport streets  
 NEWPORT STREET bet. Highland Ave. & 23rd St.  
 WENDELL H. AMMON, CIVIL ENGINEER  
 SUBMITTED BY *Wendell H. Ammon* REFERENCE  
 APPROVED *Sept. 25, 1953* DRAWN BY *2136*